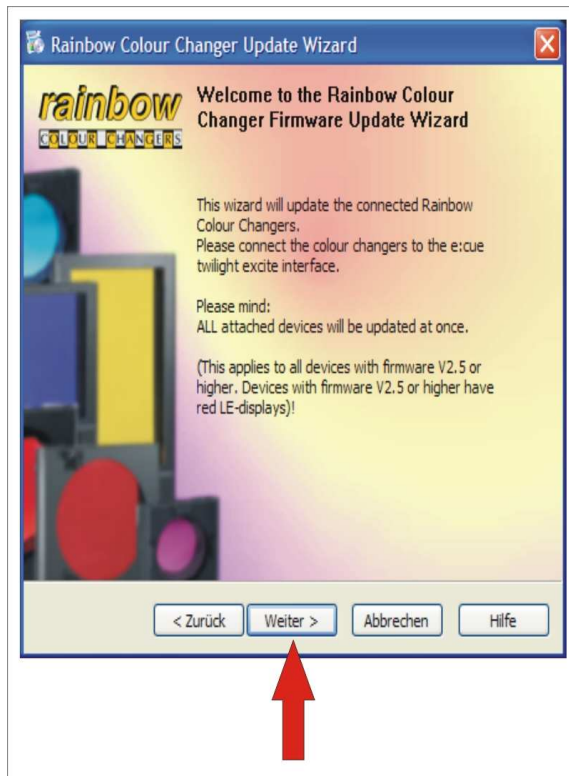


**Rainbow Colour Changers –  
Update Wizard Manual**

## How to install the Rainbow Colour Changers Update Wizard:

1. Unzip the file (a .exe file will be created)
2. Install the software by doubleclick the .exe file and follow the orders  
The Rainbow Colour Changers Wizard should be installed now
3. Start the Rainbow Colour Changer wizard.  
A screen like this should appear:

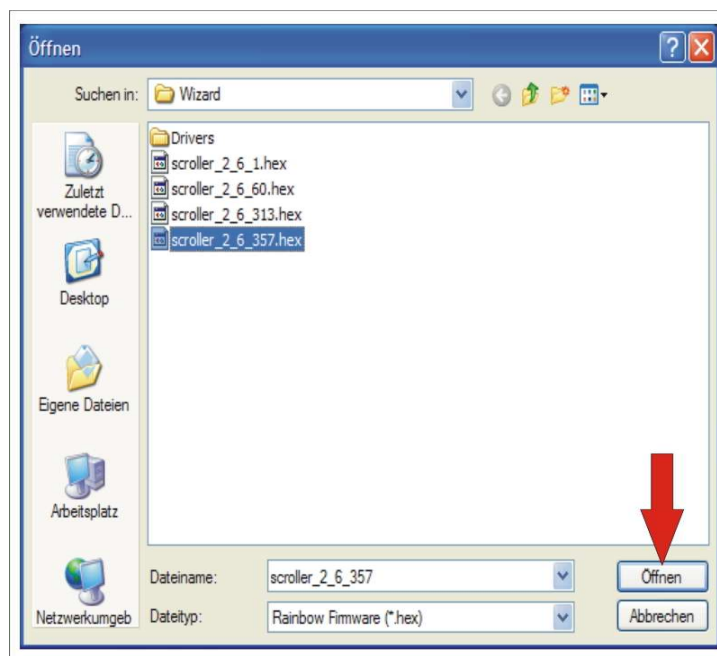


4. Press the "Weiter" button (sorry, next version will be completely English)

5. Next screen to appear is:



6. Press the "....." button and choose the actual software (f.e.2.6357). If the actual software is not displayed in the window folder, put it in by drag and drop. The screen looks like this:



7. After choosing the software, press "öffnen"  
Now the actual software is chosen, the screen looks like this:

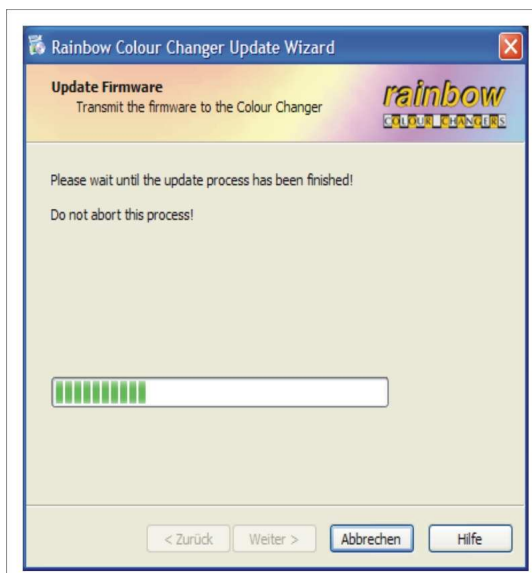


8. After pressing "weiter", the update of the software starts immediately.

**IMPORTANT:**

If you want to update scrollers, that have a very basic software – version like 1.xxxx, the "weiter" button must be pressed, directly after powering up the scrollers (while the scroller shows "boot").  
Updating from a 2.xxx version to a 2.xxx version can be done anytime.

Do not interrupt any software update – please always wait until the processing bar has finished (see next screenshot)





**Worldwide Distribution:**  
**Rainbow Colour Changers GmbH**  
An der Talle 26-28  
D-33102 Paderborn  
Germany

Tel.: +49 (0) 52 51/14 092-28  
Fax: +49 (0) 52 51/14 092-90

[www.rainbow-colour-changers.de](http://www.rainbow-colour-changers.de)  
[info@rainbow-colour-changers.de](mailto:info@rainbow-colour-changers.de)

©2007 Rainbow Colour Changers GmbH  
Rainbow is a registered trademark of  
Rainbow Colour Changers GmbH

This manual is valid from the 1<sup>st</sup> of July 2007. All previous manuals are herewith not valid any longer.

All technical specifications are subject to change without notification.

**German Distribution:**  
**Lightpower GmbH**  
An der Talle 26-28  
D-33102 Paderborn  
Germany

Tel.: +49 (0) 52 51/14 32-0  
Fax: +49 (0) 52 51/14 32-80

[www.lightpower.de](http://www.lightpower.de)  
[info@lightpower.de](mailto:info@lightpower.de)