



**Partlist**  
**15" PRO Colour Changers**  
(known as RCC 5000)

**Partlist**  
**15" PRO/PRO2 Colour Changers**  
 (known as RCC5000)



**Part No.**                      **Name**  
 PA1553                          Chassis complete 15" PRO/PRO2



PD2003                          Fan for 15" & 8Lite PRO/PRO2  
 060927                          Front cover 15" PRO/PRO2, round aperature  
 (RCC5060)

for detailed drawing of the  
 barndoor holder see end of list



PA1564-15                      Lower Front 15" PRO



RCC505                          Universal Adaptorplate for 15" PLUS, PRO/PRO2  
 incl. Hookwings (PB0515)



PB0515                          Hook Wings kit for 15" Uniadaptor RCC505  
 as spare part



PB1551                          Spindle roll, complete for 15" PRO/PRO2  
 (Spring loaded), incl. top pulley



PB1550                          Fixed roll complete for 15" PRO/PRO2  
 incl. top pulley



**Partlist**  
**15" PRO/PRO2 Colour Changers**  
 (known as RCC5000)



<u>Part No.</u>	<u>Name</u>	
PF000	Rubber Ring - Bush Viton 7,1 x 1,6	
PA1586	Adjustable Spacer for 15" & 8Lite PRO/PRO2	
PA0462	Worm for shaft Ø6, m=0,5	
PA1555	Lower right mounting assy 15" PRO/PRO2	
PA1554	Lower left mounting assy 15" PRO/PRO2	
PB1581	Upper Bearingholder with Bearing 15" & 8L PRO/PRO2	
PB1582	Lower Bearingholder with Bearing 15" & 8L PRO/PRO2	
PC2557	Belt, Timing, XL/408-6, 15" & 8lite Plus & PRO/PRO2	
PC2016	Belt, timing, T2,5/200-4	
PB3003	Motor pack complete with opto PCB	
PA1558	Chassis for electronics compl. 15" & 8L PRO/PRO2	
PB1558-15	Electronic box compl. for 15" PRO	

# Partlist

## 15" PRO/PRO2 Colour Changers

(known as RCC5000)



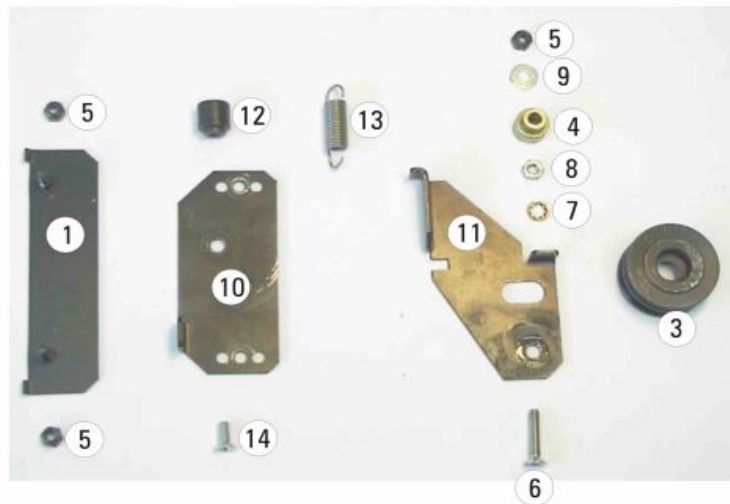
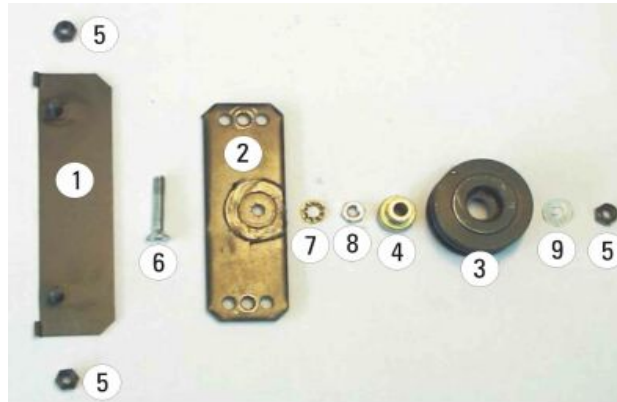
<u>Part No.</u>	<u>Name</u>
PN1534-1B	FAN PCB 15" & 8Lite PRO
PB3021-15	CPU-Board complete only for 15" PRO (PCB is not available anymore, please order new PRO2 PCB instead)
PN3022	RAINBOW PRO2 PCB, CPU-Board
PA3023	Plastic Panel with symbols, PRO/PRO2-Range
PL0100	LED Display, single 7 seg unit LTS2301AG (four required for complete display)
PR6556-1	Potentiometer, feedback, 10 turn, hybrid, 5K, type = 8146
PE1201	4pole socket for soldering on PCB, grey plastic
PB1573	Connection-Panel XLR 4pin 15" & 8L PRO incl. sockets+cables  also available in 5 pole Version
PB1573 - S	Connection-Panel XLR 5pin 15" & 8L PRO incl. sockets+cables
PV5000	Flash EPROM only for 15" PRO, when PB3021-15 is used
PV0100	PIC only for 15" PRO, when PB3021-15 is used  Barndoor holder, Details see next page



**Partlist**  
**15" PRO/PRO2 Colour Changers**  
 (known as RCC5000)

Barndoor holder, Details

- 1 PA1578
- 2 PA1574-1
- 3 PA1565-1
- 4 PA1565-2
- 5 PF2021
- 6 PF1093
- 7 PF3031
- 8 PF2002
- 9 PF3013
- 10 PA1566-1
- 11 PA1566-2
- 12 PA1566-3
- 13 PA1566-4
- 14 PF1092





**Worldwide Distribution:**  
**Rainbow Colour Changers GmbH**  
An der Talle 26-28  
D-33102 Paderborn  
Germany

Tel.: +49 (0) 52 51/14 092-28  
Fax: +49 (0) 52 51/14 092-90

[www.rainbow-colour-changers.de](http://www.rainbow-colour-changers.de)  
[info@rainbow-colour-changers.de](mailto:info@rainbow-colour-changers.de)

©2009 Rainbow Colour Changers GmbH  
Rainbow is a registered trademark of  
Rainbow Colour Changers GmbH

**German Distribution:**  
**Lightpower GmbH**  
An der Talle 26-28  
D-33102 Paderborn  
Germany

Tel.: +49 (0) 52 51/14 32-0  
Fax: +49 (0) 52 51/14 32-80

[www.lightpower.de](http://www.lightpower.de)  
[info@lightpower.de](mailto:info@lightpower.de)

All technical specifications are subject to change without notification. We do not assume liability for any incorrect information in this partlist.